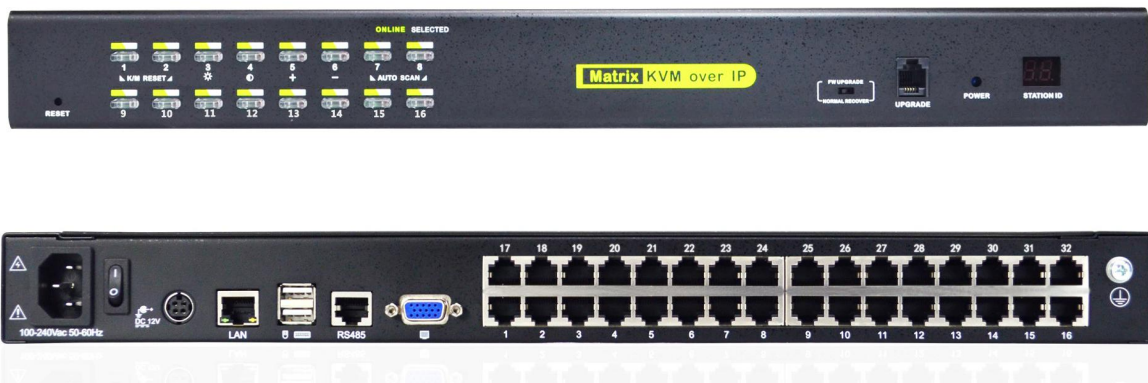


Rack Mount 1-Local / 1-Remote Access Cat5 KVM over IP Switch

(HT1108 / HT1116 / HT1132)



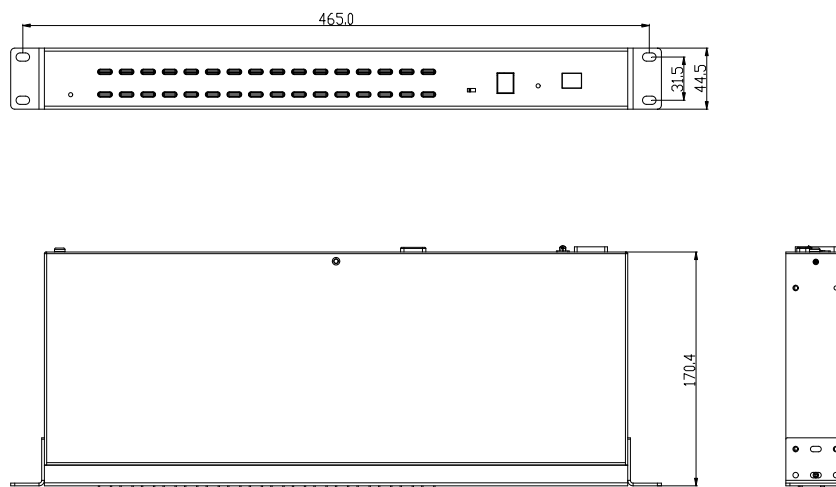
Overview

The HT11xx rack mount KVM over IP Switch is a control unit that allows secure access to 8/16/32 computers from a single KVM console.

The HT11xx IP KVM features IP-based connectivity that allows local and remote operators to monitor and access the computers. With TCP/IP communications protocol, the HT11xx IP KVM can be accessed from any computer on the LAN, WAN or Internet.

It's easy to set up the HT11xx IP KVM, just plug the cable into the appropriate port, no software needed, no complicated installation procedures, and no compatibility issues. Connect computers with compact RJ-45 connectors and Cat 5e/6 cable, transmitting distance is up to 100m.

Structure



Features

Hardware Features

- Rack-mountable in 1U system rack
- Dual power supply

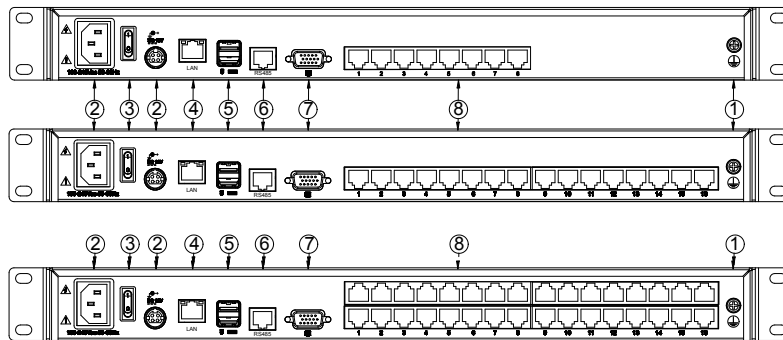
Local Console

- Control up to 8 / 16 / 32 computers
- Support 1 local user and 1 remote user, port share mode allows local and remote users to gain access to a server simultaneously
- Easy-to-use switching by browser-based UI interface, hotkeys and pushbuttons
- Support servers with VGA/DVI/HDMI/DP port
- Multiplatform client support (Windows, Linux, Unix, Mac, Solaris (Sun), Redhat, Ubuntu)
- Local Console, Browser, and AP GUIs offer a unified Multilanguage interface
- Support mouse synchronization mode--automatically synchronizes the local and remote mouse movements
- Video synchronization with local console - EDID information for local console display can be stored in the host module for video resolution optimization
- Keyboard and mouse emulation to ensure the normal booting
- Broadcast mode--operations simultaneously performed on all selected computers
- Auto scan feature for monitoring user-selected computer
- Hot pluggable--add or remove computers without having to power down the switch

Remote Console

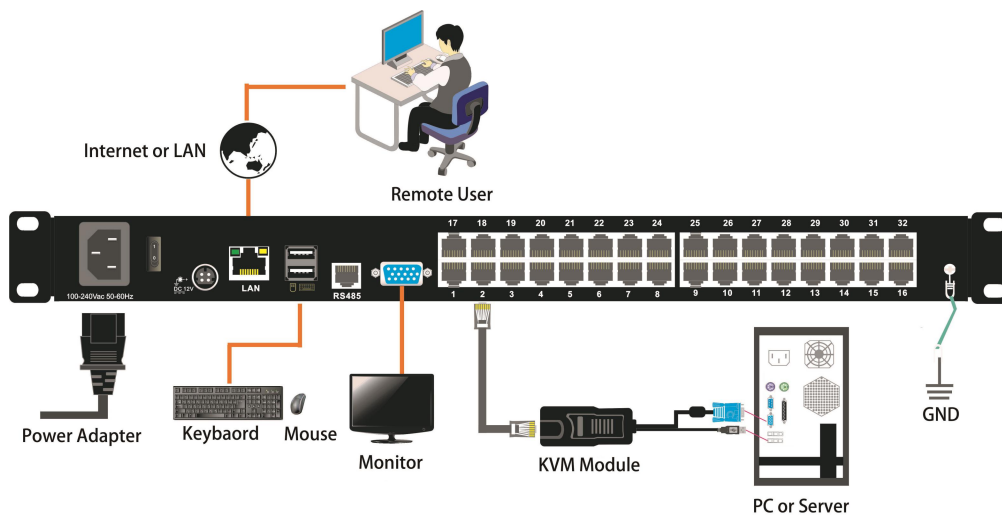
- Adaptive 10 / 100 / 1000 Mbps network
- WEB browser-based or KVM_Clients remote management BIOS-level access
- BIOS-level access
- Video quality and video tolerance can be adjusted to optimize data transfer speed, data transfer speed is up to 60 FPS
- Full screen or scalable video display
- Remote users and local users can control the same server/computer synchronously
- Support AES / DES / 3DES encryption
- Support audit function-allows the administrator to audit the device through the system log and operation log
- Exit Macros support
- Configurable user and group permissions for server access and control
- Support strong password
- Support firmware upgrade

Connector



1	Ground Connection Screw	5	USB Port
2	Power input(AC or DC)	6	RS485 Port
3	Power switch	7	Console Monitor Port
4	LAN port	8	Host Port

Connection Diagram



Package Contents

- 1x KVM over IP switch
- USB KVM Dongle (Optional)
- 2x Mounting Rails
- 1x Shield Network Cable
- 1x Power Cord
- 1x Ground Wire
- 1x Quick Start Guide
- 1x User Manual

Specifications

Model		HT1108	HT1116	HT1132	
Computer Connection		8	16	32	
Port selection		8	16	32	
Port selection		Pushbutton, UI, Web, Hotkey			
Connector	Console	Keyboard	2x USB TYPE A		
		Mouse			
		Monitor	1-HDB-15 Female(blue)		
	KVM Port (RJ-45)		8	16	32
	Upgrading switch		1x RJ11 Female		
Power		3-Prong AC socket			
Switch	Port Selection		8	16	32
	Reset		1x touch-button		
	Upgrading switch		1x toggle switch		
	Power		1x rocker switch		
LEDs	Online (Green)		8	16	32
	Selected (Orange)		8	16	32
	Power		1(blue)		
	Cascade display		2x 7- Segment (orange)		
Remote	Remote control		KVM control (ActiveX control)		
	Management way		Web		
	Security		DES encryption		
	Resolution		1920×1080@60Hz		
I/R Value		100V-240Vac, 50-60Hz, <1.5A			
Power Consumption		8W	9W	11 W	
Environment Requirements	Operating Temperature		0 — 50 °C		
	Store Temperature		-20— 60 °C		
	Humidity		0—80%RH, Non-condensing		
Physical Features	Material		Metal		
	Weight		2.9kg	2.9kg	3.2kg
	Dimension		433x171x44.5mm		